

# DAZE

Daze Sofa exemplifies a professional aesthetic through its perfect fusion of flexibility, space-saving comfort, and a design that is easy to maintain—elements that create a memorable first impression. Its minimalist style enhances visual appeal while offering a durable solution, making it ideal for high-traffic areas.



1 SEATER  
DX-DAZ-01-SS



2 SEATER  
DX-DAZ-02-DS



3 SEATER  
DX-DAZ-03-TS



1.5 SEATER  
DX-DAZ-1.5-SS



2.5 SEATER  
DX-DAZ-2.5-DS

# DAZE

The Daze Sofa Design seamlessly blends elegance and comfort through its sleek lines and plush cushions. With a variety of fabric options available, it's ideal for both relaxation and entertaining. Featuring a sturdy frame and sophisticated details, it stands out as a statement piece in contemporary living spaces, showcasing a refined taste and timeless charm.



Made with smooth cream fabric and steady stitching, our sofas offer a simple, stylish look that brings warmth and comfort to your space.



### ALUMINUM BASE

Crafted from high-quality aluminum with a mirror-like electroplated finish. It boasts excellent strength, wear resistance, and protection against rust and corrosion, making it ideal for long-term fixed furniture use.



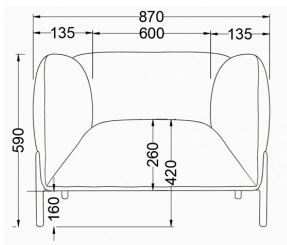
### HIGH DENSITY FOAM

The product provides excellent durability and support, preventing sagging and maintaining its shape, leading to a longer lifespan and a stable, comfortable seating experience.

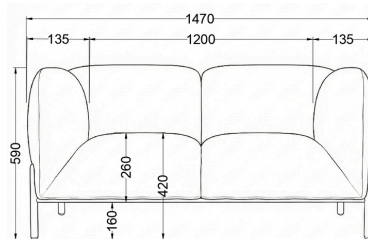


### ZIG ZAG SPRING

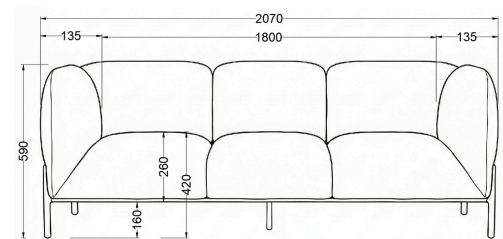
The creation of a sofa is a refined process that demands advanced and specialized techniques, exceptional craftsmanship, meticulous attention to detail, and a commitment to lasting durability.



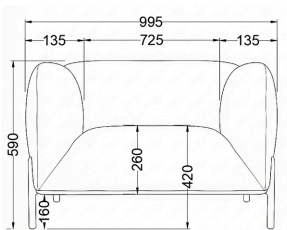
**1 SEATER**  
DX-CMD-01-SS  
870(L) X 860(W) X 420(SH) X 590(H)



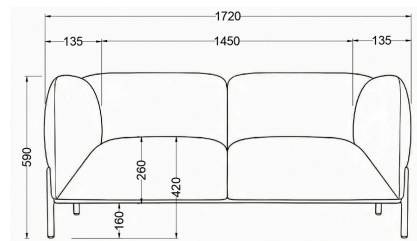
**2 SEATER**  
DX-CMD-02-DS  
1470(L) X 860(W) X 420(SH) X 590(H)



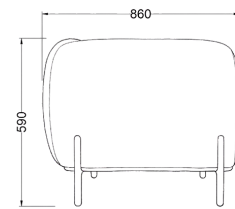
**3 SEATER**  
DX-CMD-03-TS  
2070(L) X 860(W) X 420(SH) X 590(H)



**1.5 SEATER**  
DX-CMD-1.5-SS  
995(L) X 860(W) X 420(SH) X 590(H)



**2.5 SEATER**  
DX-CMD-2.5-DS  
1720(L) X 860(W) X 420(SH) X 590(H)



**SIDE VIEW**